

## 5 Kamlok SET „ALU“ including anti-twist safeguard and earthing lug

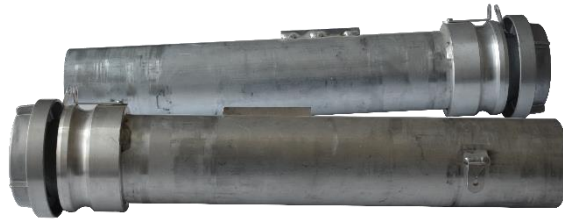
**KSG-V-B** - set, consisting of: (packed in cartons)

2 - aluminium tube DN100, L = 500 mm with anti-twist safeguard and earthing lug

2 - A-fixed couplings without thread

2 - A-dummy couplings, ventable 30 cm<sup>2</sup>

### 5.1 Straight



Item No.	Type	Dimension [mm]	Tube length [mm]	kg/set	Drawing No.
14408	KSG-V-B	100	500	4,2	Z14408.01-17-01-DE

### 5.2 45° bend



Item No.	Type	Dimension [mm]	Tube length [mm]	kg/set	Drawing No.
14409	KSB-V-B	100	500	5,2	Z14409.01-17-01-DE